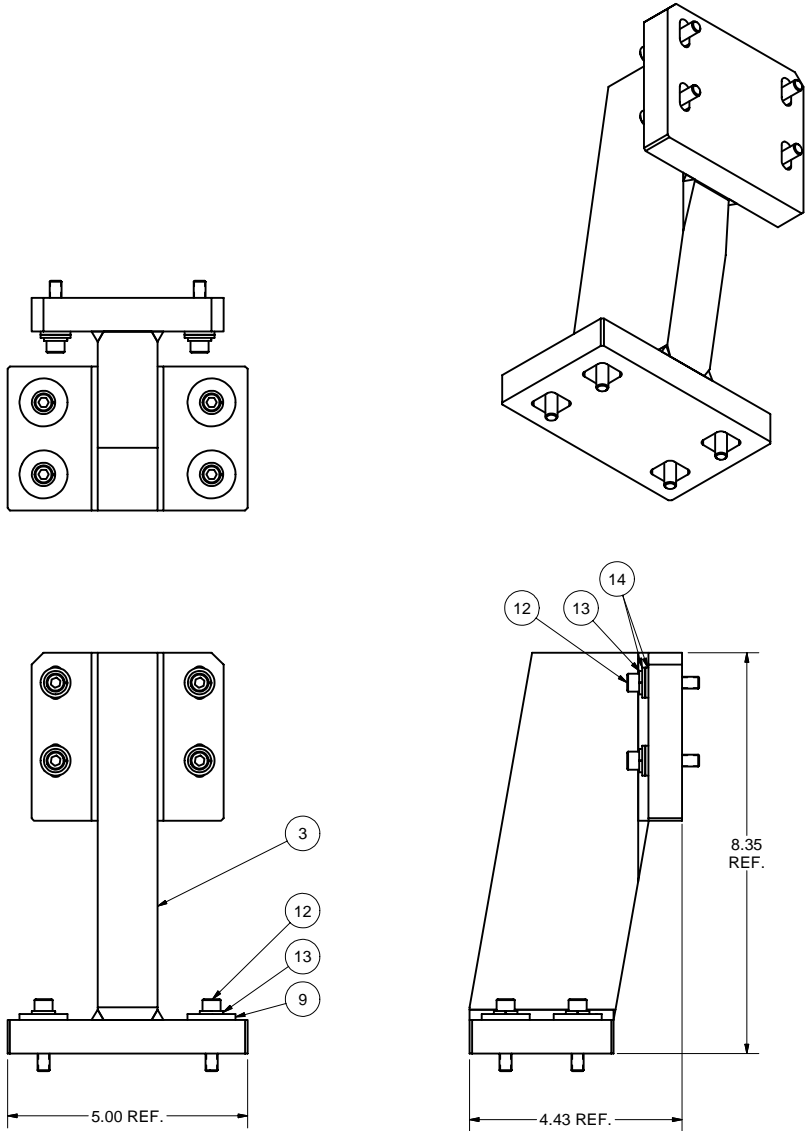
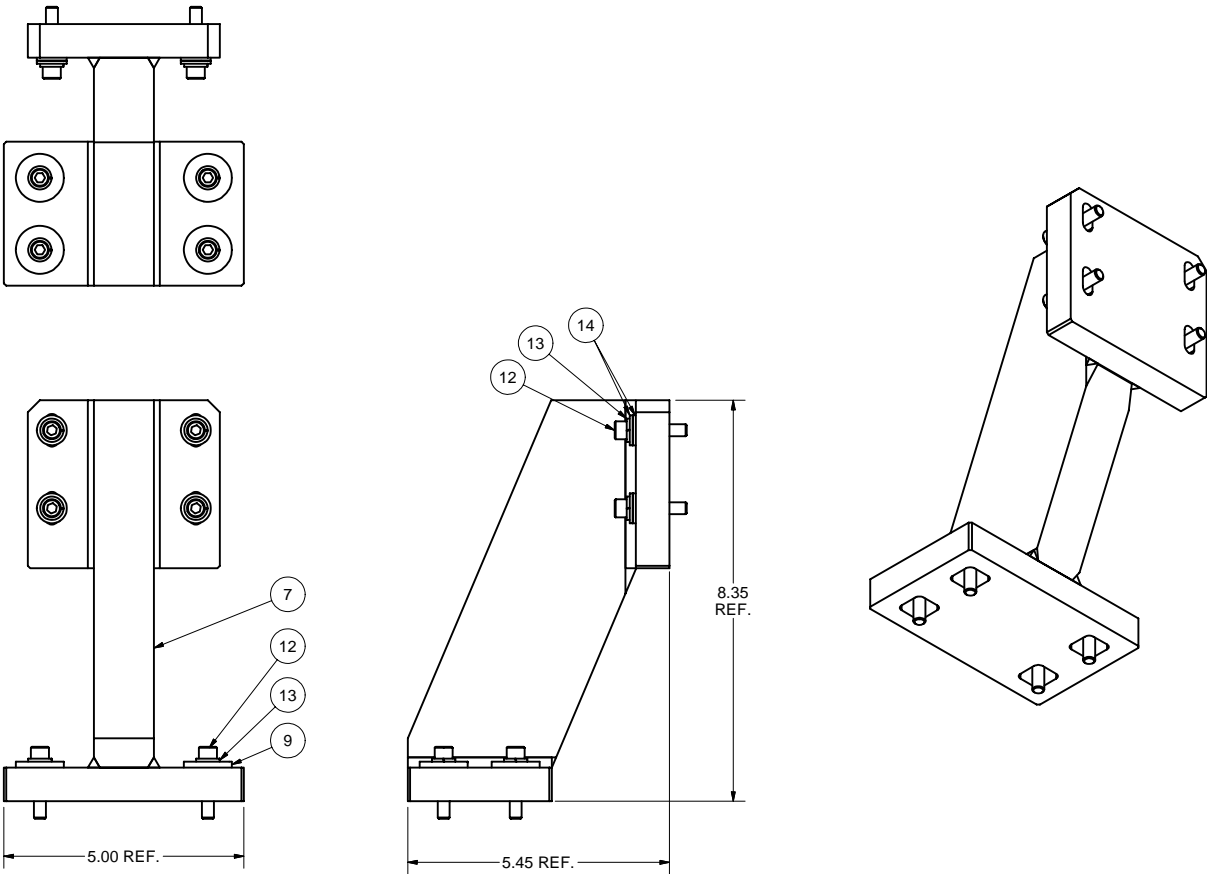


REVISIONS			
SYM.	ZONE	DESCRIPTION	DATE APP.



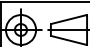
14	Purchased	1/4 Flat Washer, SS	8			McMaster-Carr's 96659A106		
13	Purchased	1/4 Spring Washer, SS	8			McMaster-Carr's 92146A029		
12	Purchased	1/4-28 x 1-1/4 Socket Head Cap Screw, SS	8			McMaster-Carr's 92196A327		
9	7102-125 (Sh.3)	WIDE WASHER	4					
3	7102-125 (Sh.2)	ENTRANCE GATE VALVE BRACKET SUB-ASM	1					
1	7102-125 (Sh.1)	ENTRANCE GATE VALVE BRACKET ASSEMBLY	X					

**1** **ENTRANCE GATE VALVE BRACKET ASSEMBLY**  
FILE NAME: 7102-125  
SHEET NO.: 1  
DFT. SCALE: 1:2  
MATERIAL:  
QTY: 1 PER CRYOMODULE  
NOTES:



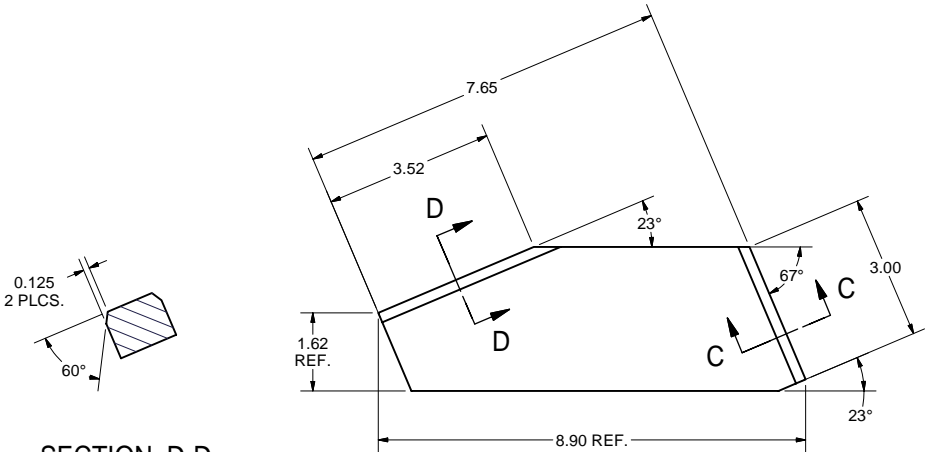
14	Purchased	1/4 Flat Washer, SS	8			McMaster-Carr's 96659A106		
13	Purchased	1/4 Spring Washer, SS	8			McMaster-Carr's 92146A029		
12	Purchased	1/4-28 x 1-1/4 Socket Head Cap Screw, SS	8			McMaster-Carr's 92196A327		
9	7102-125 (Sh.3)	WIDE WASHER	4					
7	7102-125 (Sh.3)	EXIT GATE VALVE BRACKET SUB-ASM	1					
2	7102-125 (Sh.1)	EXIT GATE VALVE BRACKET ASSEMBLY	X					

**2** **EXIT GATE VALVE BRACKET ASSEMBLY**  
FILE NAME: 7102-125  
SHEET NO.: 1  
DFT. SCALE: 1:2  
MATERIAL:  
QTY: 1 PER CRYOMODULE  
NOTES:

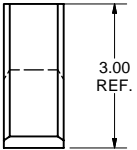
		ITEM	DWG. NO.	DESCRIPTION	G1	G2	G3	REMARKS	REV.
					QUANTITY				
D	PRINT DISTR.	PLOT DATE: 9/7/2007 CAD FILE NAME: 7102-125.idw							
7102-125 SH. NO. 1 OF 3		CR-1	CORNELL UNIVERSITY Floyd R. Newman Laboratory Ithaca, NY 14853						
			UNLESS OTHERWISE SPECIFIED:  DIMENSIONS ARE IN INCHES: TOLERANCES ON: .0 ± .02 .00 ± .010 .000 ± .005 FRACTIONS ± 1/32 ANGLES ± 0.5° ALL SURFACES ✓						
			ERL INJECTOR CRYOMODULE BRACKETS FOR GATE VALVES ENTRANCE AND EXIT GATE VALVES BRACKETS ASSEMBLY						
REV.		CHECKED BY: V.M. APPROVED BY: V.M.	DRAWN BY vm	DRAWN FOR M.Liepe	DATE 8/31/2007	SCALE	D	7102-125 SH. NO. 1 OF 3	REV.



REVISIONS				
SYM.	ZONE	DESCRIPTION	DATE	APP.

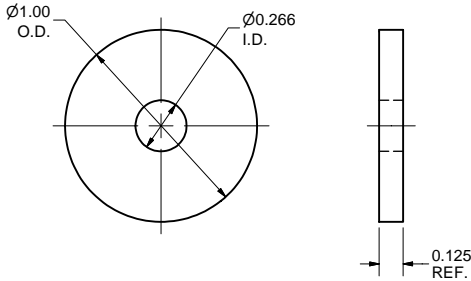


SECTION D-D

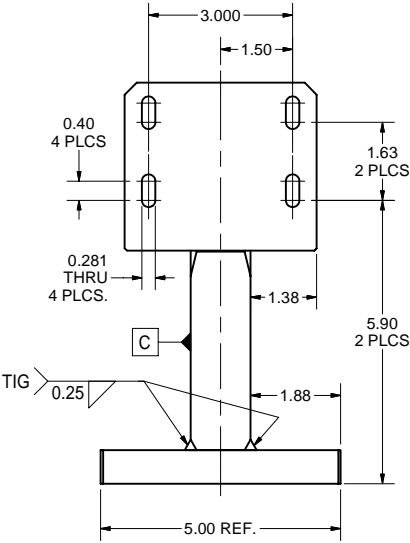
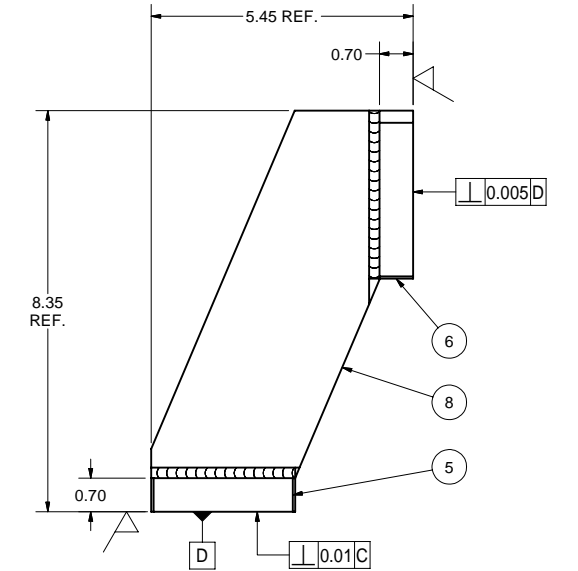


SECTION C-C

8 EXIT BRACKET PLATE  
FILE NAME: 7102-125  
SHEET NO.: 3  
DFT. SCALE: 1:2  
MATERIAL: 1-1/4" x 3" 304L STAINLESS STEEL BAR  
QTY: 1 PER CRYOMODULE  
NOTES:

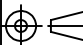



9 WIDE WASHER  
FILE NAME: 7102-125  
SHEET NO.: 3  
DFT. SCALE: 2:1  
MATERIAL: 1/8" THK. 304L STAINLESS STEEL SHEET  
QTY: 8 PER CRYOMODULE  
NOTES:



7 EXIT GATE VALVE BRACKET SUB-ASM  
FILE NAME: 7102-125  
SHEET NO.: 3  
DFT. SCALE: 1:2  
MATERIAL:  
QTY: 1 PER CRYOMODULE  
NOTES:

8	7102-125 (Sh.3)	EXIT BRACKET PLATE	1					
6	7102-125 (Sh.2)	VERTICAL PLATE	1					
5	7102-125 (Sh.2)	HORIZONTAL PLATE	1					
7	7102-125 (Sh.3)	EXIT GATE VALVE BRACKET SUB-ASM	X					

		ITEM	DWG. NO.	DESCRIPTION	G1	G2	G3	REMARKS	REV.
D		PRINT DISTR.	PLOT DATE: 9/7/2007 CAD FILE NAME: 7102-125.idw		QUANTITY				
7102-125 SH. NO. 3 OF 3		CR-1	<div>UNLESS OTHERWISE SPECIFIED:  DIMENSIONS ARE IN INCHES; TOLERANCES ON:     .0 ± .02     .00 ± .010     .000 ± .005 FRACTIONS ± 1/32 ANGLES ± 0.5° ALL SURFACES ✓</div> <div> CORNELL UNIVERSITY Floyd R. Newman Laboratory Ithaca, NY 14853</div>		ERL INJECTOR CRYOMODULE BRACKETS FOR GATE VALVES EXIT GATE VALVE BRACKET SUB-ASM; EXIT BRACKET PLATE; WIDE WASHER				
REV.		CHECKED BY: V.M. APPROVED BY: V.M.							